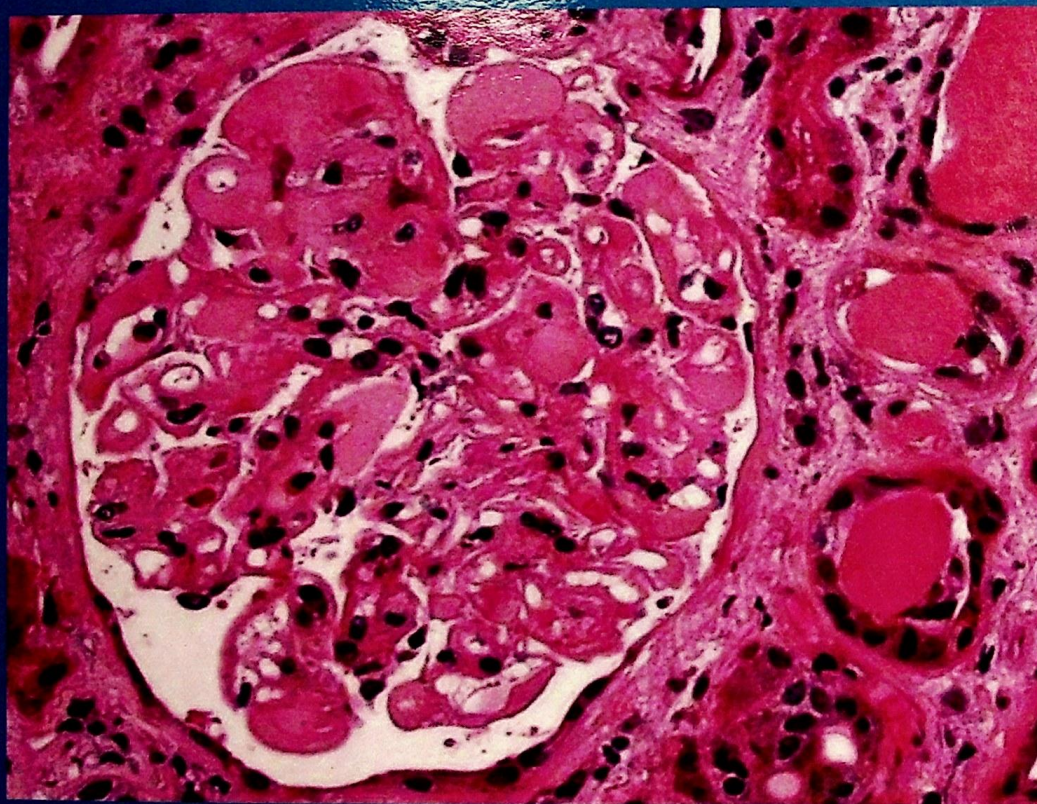


# JOURNAL OF PATHOLOGY OF NEPAL

ISSN: 2091-0797  
VOL 1 | Issue 1  
March 2011



An Official  
Publication of





TABLE OF CONTENT

EDITORIAL

- I The new beginning

ORIGINAL ARTICLES

- 1-7 Quantitation of  $\alpha_{1A}$  and  $\alpha_{1D}$ -adrenoceptor mRNA in prostate tissues from patients with symptomatic benign prostatic hyperplasia  
*Acharya B, Okada H, Aryal G, Shirakawa T, Hinata N, Gotoh A*
- 8-12 Fine needle aspiration cytology of palpable supraclavicular lymph nodes.  
*Adhikari RC, Jha A, Sayami G, Shrestha S, Sharma SK*
- 13-16 Histopathological pattern of endometrial samples in abnormal uterine bleeding  
*Baral R, Pudasaini S*
- 17-21 Ultrasound and computed tomography guided fine needle aspiration cytology in diagnosing intra-abdominal and intra-thoracic lesions  
*Parajuli S, Tuladhar A, Basnet RB*
- 22-25 Histopathological pattern of central nervous system tumor: A three year retrospective study  
*Aryal G*
- 26-29 Anemia in chronic kidney disease patients in predialysis and postdialysis stages  
*Bhatta S, Aryal G, Kafle RK*
- 30-33 Analysis of abnormal epithelial lesions in cervical Pap smears in Mid-Western Nepal  
*Ranabhat SK, Shrestha R, Tiwari M*
- 34-36 Association of mast cells with helicobacter pylori infection in the antral mucosa  
*KC SR, Amatya GL*
- 37-40 Metastatic cutaneous and subcutaneous lesions: Analysis of cases diagnosed on fine needle aspiration cytology  
*Karki S, Pathak R, Manandhar U, Koirala S*

(Continued on following page)

Cover Legend:

Glomerulus showing mesangial nodules in light chain deposition disease (HE stain, X40).

- 41-44** Study of gastrointestinal stromal tumors with c-kit immunostaining  
*Sigdel B, Vaidya S, KC Sabira*
- 45-48** Anaplastic carcinoma of the thyroid – clinico-morphological spectrum and review of literature  
*Ghosh A, Nepal N, Gharti MD, Basnet S, Baxi M, Talwar OP*
- 49-51** Oral cavity lesions: A study of 21 cases  
*Pudasaini S, Baral R*

#### REVIEW ARTICLES

- 52-55** A path to renal transplantation in Nepal  
*Enns J, Aryal G*
- 56-59** Light chain deposition disease in kidney: A review of the literature  
*Pant AD, Solez K*

#### CASE REPORT

- 60-62** Histological assessment of the effect of neoadjuvant chemotherapy on conventional high grade osteosarcoma of the long bones  
*Thapa JB*
- 63-65** A rare case of Castleman's disease presenting as pulmonary mass mimicking pulmonary malignancy  
*Bashyal R, Lee MC, Thakur B, Singh LN*
- 66-68** Glomus tumor of uncertain malignant potential  
*Baral R, Limbu H*
- 69-72** Congenital granular cell epulis: A rare diagnosis  
*Sigdel B, Baidya R, Shrestha P, Shrestha S*

#### VIEW POINTS

- 73-74** Scientific writing: Need of the day

#### **75** ACPN EVENTS

- 76-80** JOURNAL OF PATHOLOGY OF NEPAL (JPN) GUIDELINES TO AUTHORS
-